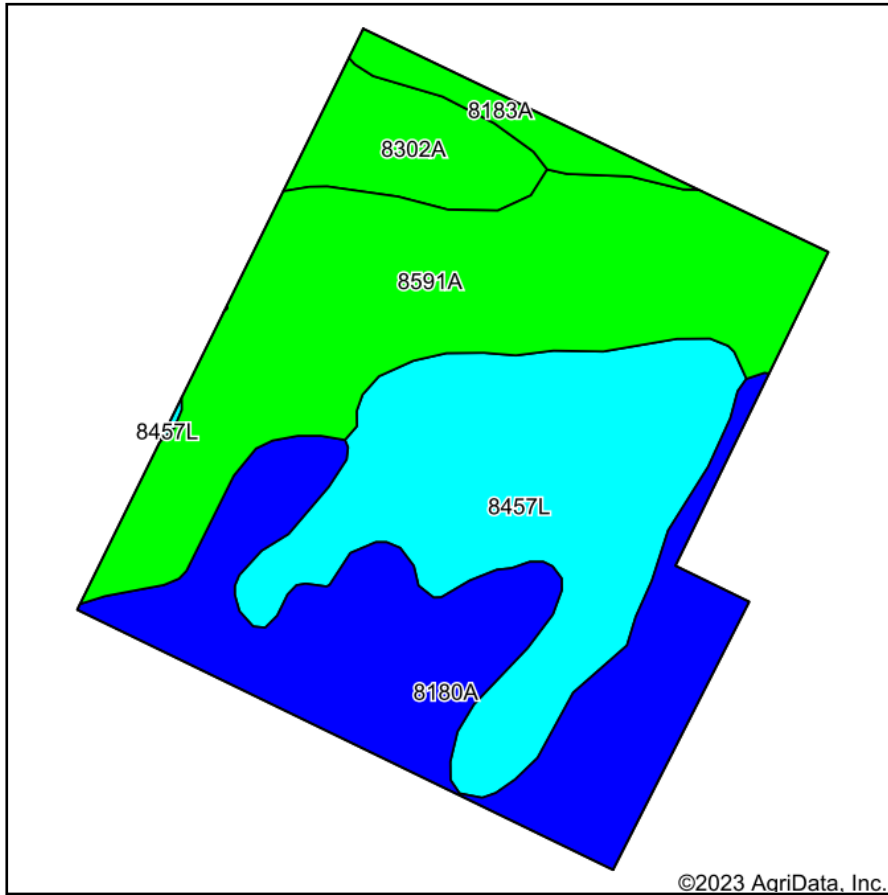
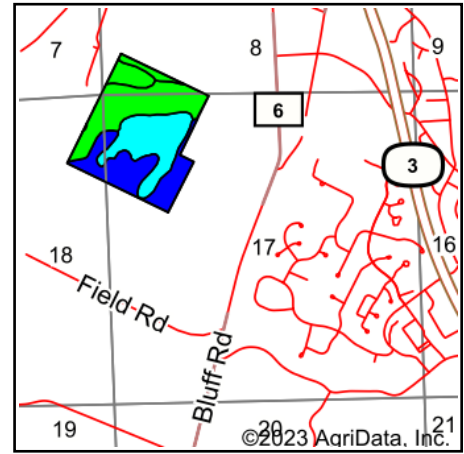


# Soils Map



Soils data provided by USDA and NRCS.



State: **Illinois**  
 County: **Monroe**  
 Location: **17-1S-10W**  
 Township: **Precinct 10**  
 Acres: **90.7**  
 Date: **6/20/2023**



Maps Provided By:  
  
 CUSTOMIZED ONLINE MAPPING  
 © AgriData, Inc. 2023 www.AgriDataInc.com



Area Symbol: IL133, Soil Area Version: 15									
Code	Soil Description	Acres	Percent of field	Il. State Productivity Index Legend	Corn Bu/A	Soybeans Bu/A	Wheat Bu/A	Alfalfa d hay, T/A	Crop productivity index for optimum management
8591A	Fults silty clay, 0 to 2 percent slopes, occasionally flooded	29.77	32.8%		155		50	59	0.00
8457L	Booker clay, 0 to 2 percent slopes, occasionally flooded, long duration	26.32	29.0%		116		41	44	0.00
8180A	Dupo silt loam, 0 to 2 percent slopes, occasionally flooded	26.08	28.8%		182		56	68	0.00
8302A	Ambrow silty clay loam, 0 to 2 percent slopes, occasionally flooded	5.82	6.4%		154		50	61	0.00
8183A	Shaffton clay loam, 0 to 2 percent slopes, occasionally flooded	2.71	3.0%		155		51	60	0.00
<b>Weighted Average</b>					<b>151.4</b>	<b>49.1</b>	<b>57.4</b>	<b>0.00</b>	<b>112</b>

**Table: Optimum Crop Productivity Ratings for Illinois Soil by K.R. Olson and J.M. Lang, Office of Research, ACES, University of Illinois at Champaign-Urbana.** Version: 1/2/2012 Amended Table S2 B811

Crop yields and productivity indices for optimum management (B811) are maintained at the following NRES web site: <http://soilproductivity.nres.illinois.edu/>

\*\* Indexes adjusted for slope and erosion according to Bulletin 811 Table S3

d Soils in the poorly drained group were not rated for alfalfa and are shown with a zero "0".

Soils data provided by USDA and NRCS. Soils data provided by University of Illinois at Champaign-Urbana.