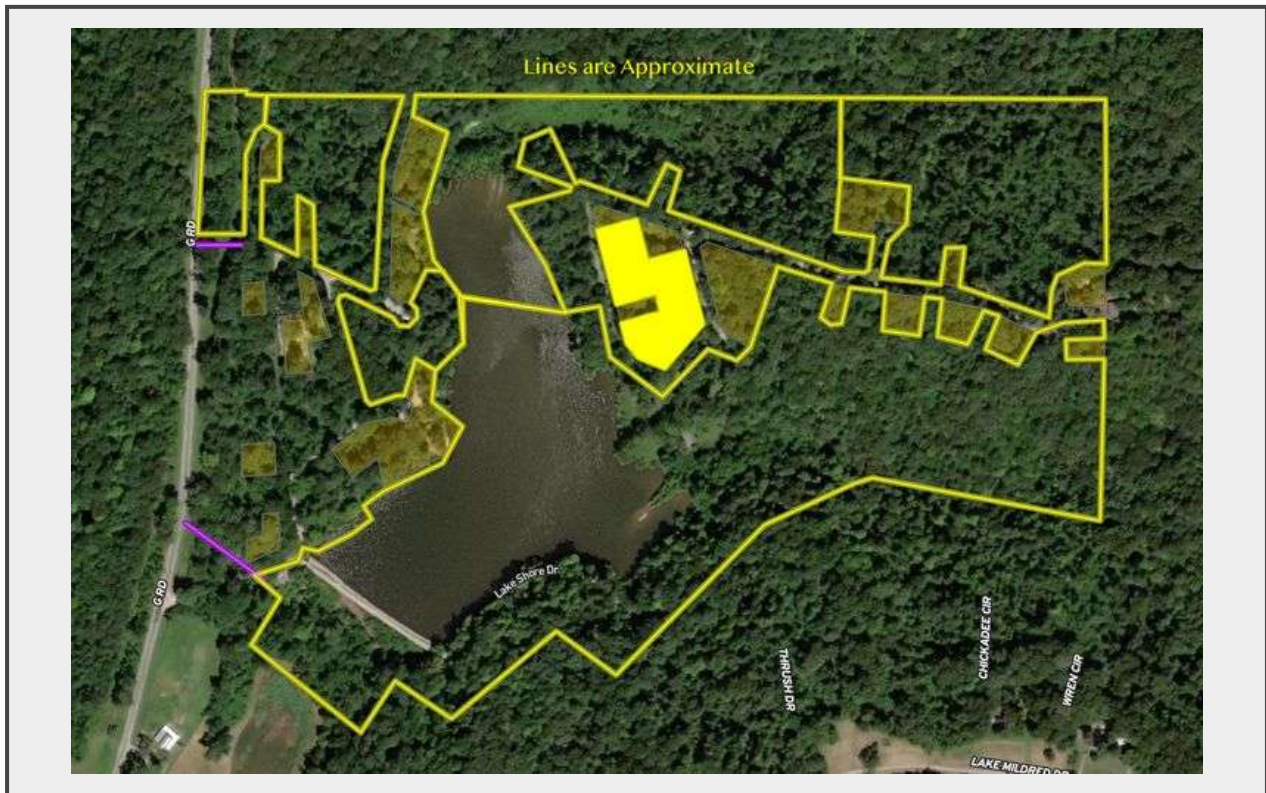


Sale Name: Land Auction: 73.5 ± acres, Monroe County, IL

LOT 5 - Tract 5: 1.88 ± Acres



Description

Tract 5 - 1.88 +/- acres - **(Survey Updated to 1.9 acres)** This grouping of lots has two A-Frame homes on it. The buildings are uninhabitable. The home on this property used to get their water from the 42 acre tract. It is not currently functioning and will not have a water source once sold. Address(s) Associated: 1432 LAKE FRONT DR, PRAIRIE DU ROCHER, IL, 62277, 1400 LAKE FRONT DR, PRAIRIE DU ROCHER, IL, 62277, 1420 LAKE FRONT DR, PRAIRIE DU ROCHER, IL, 62277, 1407 LAKE SHORE DR, PRAIRIE DU ROCHER, IL, 62277, 1403 LAKE SHORE DR, PRAIRIE DU ROCHER, IL, 62277 Parcel(s) Associated: 1805307014000, Part of 1805307099000 (Two GIS lots with this parcel number, 1805307011000, 1805307003000, & 1805307006000.

Quantity: 1



**[https://
www.propertypeddlerauction.com/](https://www.propertypeddlerauction.com/)**